

GOTO UNIT

Goto components are designed for an exclusive audiophile usage, with oversized sophisticated magnets and ultra light moving parts. These features provide natural and dynamic reproduction of music.

The Goto products range includes compression drivers for high-bass, low-midrange and midrange, tweeters, horns and cone loudspeakers.



Goto tweeters with S-3000AL horn

SG-16TT is designed for handling the top end of the frequency spectrum. The diaphragm is made of formed titanium with an FRP edge. The powerful magnetic circuit uses a 125mm diameter Alnico ring magnet and Permendur for the magnetic gap, which provides a good damping factor and low distortion.

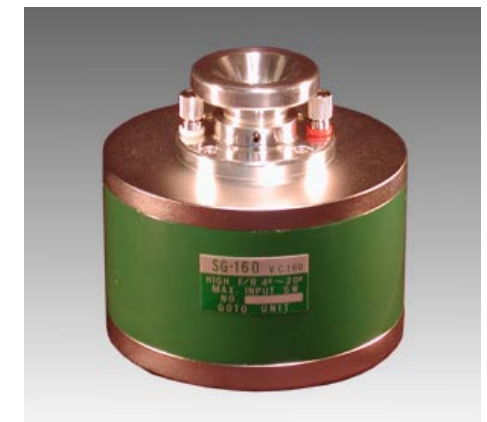
SG-160 includes a larger and stronger 130 mm diameter magnet. It creates high resolution sound of superior transparency for rich and natural music reproduction.

In the standard configuration, both types are fitted with horns that are bored from a round aluminum bar and have a cut-off frequency of 3kHz.

Goto Tweeters	SG-16TT	SG-160
Maximum Input Power(Music)	5 w	5 w
Impedance (ohms)	8-16	8-16
Efficiency	110 dB/W/m	110 dB/W/m
Frequency response	Over 4 KHz	Over 4 KHz
Total magnetic flux (Maxwell)	360,000	360,000
Magnetic flux density (Gauss)	24,000	24,000
Crossover frequency	Over 5 KHz	Over 5 KHz
Dimensions (mm)	125 x 115	125d x 115
Diaphragm	Titanium FRP Edge	Titanium FRP Edge



SG-16TT



SG-160

High midrange drivers

SG-370 handles the mid/high frequency range to which the human ear is most sensitive.

Thanks to the use of an FRP edge for the titanium diaphragm, a magnetic circuit with a 130mm Alnico ring magnet and Permendur, transient characteristics are excellent.

SG-370DX features a larger and stronger 140mm magnet.

Both types can be fitted with the S-600 straight horn, well deadened.

High Midrange Drivers	SG-370	SG-370 DX
Maximum Input Power(Music)	5 w	5 w
Impedance (ohms)	8-16	8-16
Efficiency	110 dB/W/m	113 dB/W/m
Frequency response	400 Hz - 18 KHz	400 Hz - 18 KHz
Total magnetic flux (Maxwell)	500,000	1000,000
Magnetic flux density (Gauss)	24,000	24,000
Crossover frequency	1 - 5 KHz	1 - 5 KHz
Recommended Horn	S-600, S-800	S-600, S-800
Dimensions (mm)	130d x 120	140d x 130
Diaphragm	Titanium FRP Edge	Titanium FRP Edge



SG - 370

Low Midrange

SG-505 TT is a low midrange driver. The 50 mm diameter diaphragm is made of titanium with a FRP surround. Magnetic circuit uses a 130 mm diameter Alnico magnet and Permendur. The audible result is solid sound with further improved definition and clarity. Throat diameter is 30 mm.

The SG-505DX has a larger (140 mm) and stronger magnet.

The SG-570 has a larger (160 mm) and stronger magnet, and a larger diaphragm(57 mm).

Three types of hyperbolic horns can be fitted on these drivers : S-150B (150Hz cut-off frequency), S-200B (200Hz cut-off frequency) and S-300B (300Hz cut-off frequency).



SG - 505



SG - 570

Low Midrange	SG-505	SG-505DX	SG-570
Maximum Input Power(Music)	15 w	15 w	15 w
Impedance (ohms)	8-16	8-16	8-16
Efficiency	110 dB/W/m	110dB/W/m	113 dB/W/m
Frequency response	100Hz - 8 KHz	100Hz - 8 KHz	100Hz - 8 KHz
Total magnetic flux (Maxwell)	500,000	1000,000	1100,000
Magnetic flux density (Gauss)	24,000	24,000	24,000
Crossover frequency	200- 1 KHz	200- 1 KHz	200- 1 KHz
Recommended Horn	S-150B, S-200B	S-150B, S-200B	S-150B, S-200B
Dimensions (mm)	130d x 120	140d x 130	160d x 130
Diaphragm	Titanium FRP Edge	Titanium FRP Edge	Titanium FRP Edge

High Bass

The SG-146LD is a low frequency driver for reproduction of the 20-500 Hz frequency range.

A throat adapter allow the mounting of two drivers in a horn, thus reducing the horn length.

High Bass	SG-146LD
Impedance (Ohm)	16
Efficiency	106 dB/w/m
Frequency Response	20 - 500 Hz
Total Magnetic Flux (Maxwell)	300,000
Magnetic Flux Density (gauss)	19,000
Dimensions (mm)	220d x 127
THroat (2 drivers in 1 horn)	Size 100 x 110 x 220



SG - 146LD

GOTO Horns

Mid-Low Midrange Horns	SG-150B	SG-200DX	SG-300
Full Length (mm)	1250	835	505
Mouth Diameter (mm)	750	540	400
Cutoff Frequency (Hz)	150	200	300
Crossover frequency (Hz)	180 - 220	250 - 350	400 - 500
Material	Aluminium	Aluminium	Aluminium
Type	Straight Circular	Straight Circular	Straight Circular



S-150B

High Midrange Horns	SG-600B	SG-800DX
Full Length (mm)	232	165
Mouth Diameter (mm)	180	145
Cutoff Frequency (Hz)	800	800
Crossover frequency (KHz)	1 - 1.2	1.2 - 2
Material	Aluminium	Aluminium
Type	Straight Circular	Straight Circular



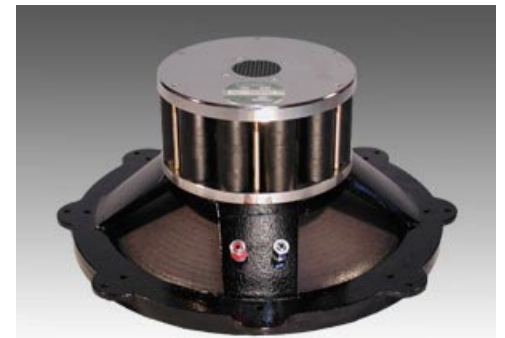
S-600B

Goto speaker drivers

30cm Woofer	SG-30W	SG-30WS
Nominal Diameter	30cm	30cm
Maximum Input Power (Music)	35w	35w
Impedance (Ohms)	8-16	8-16
Efficiency	100db/w/m	100db/w/m
Frequency Response	36Hz - 1.5 KHz	36Hz - 1.5 KHz
Total Magnetic Flux (Maxwell)	1,000,000	1,300,000
Magnetic Flux Density (Gauss)	16,000	17,000
Crossover frequency	200 - 1500 Hz	200 - 1500 Hz
Fs	36 Hz (Qts 0.25)	36 Hz (Qts 0.25)
Dimensions (mm)	345d x 144	345d x 169
Magnet Dimensions (mm)	168d x 74	168d x 99



SG-30WS



SG-38WN

38cm Woofer	SG-38WN	SG-38WNS	SG-38WNSS	SG-38WNSP	SG-38WNSSP
Nominal Diameter	38cm	38cm	38cm	38cm	38cm
Maximum Input Power (Music)	40w	40w	40w	40w	40w
Impedance (Ohms)	5-16	5-16	5-16	5-16	5-16
Efficiency	105db/w/m	108db/w/m	110db/w/m	110db/w/m	110db/w/m
Frequency Response	28Hz - 800 KHz	28Hz - 800 KHz	28Hz - 800 KHz	28Hz - 800 KHz	28Hz - 800 KHz
Total Magnetic Flux (Maxwell)	1,300,000	1,600,000	3,000,000	2,200,000	3,000,000
Magnetic Flux Density (Gauss)	16,000	18,000	18,000	20,000	20,000
Crossover frequency	200 - 500 Hz	200 - 500 Hz	200 - 500 Hz	200 - 500 Hz	200 - 500 Hz
Fs	28 Hz	28 Hz	28 Hz	28 Hz	28 Hz
Qts	0.25	0.25	0.25	0.25	0.25
Dimensions (mm)	435d x 165	435d x 191	435d x 216	435d x 191	435d x 216
Magnet Dimensions (mm)	200d x 76	202d x 102	202d x 127	220d x 102	220d x 127